


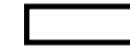


# PLAN DE PREVENTION DES RISQUES NATURELS PREVISIBLES des Communes de MACHILLY- SAINT-CERGUES - JUVIGNY - VILLE-LA-GRAND - AMBILLY et GAILLARD

## Carte des aléas Commune d'AMBILLY




### Degré d'aléa

-  Zone d'aléa fort (degré 3)
-  Zone d'aléa moyen (degré 2)
-  Zone d'aléa faible (degré 1)
-  Zone d'aléa négligeable

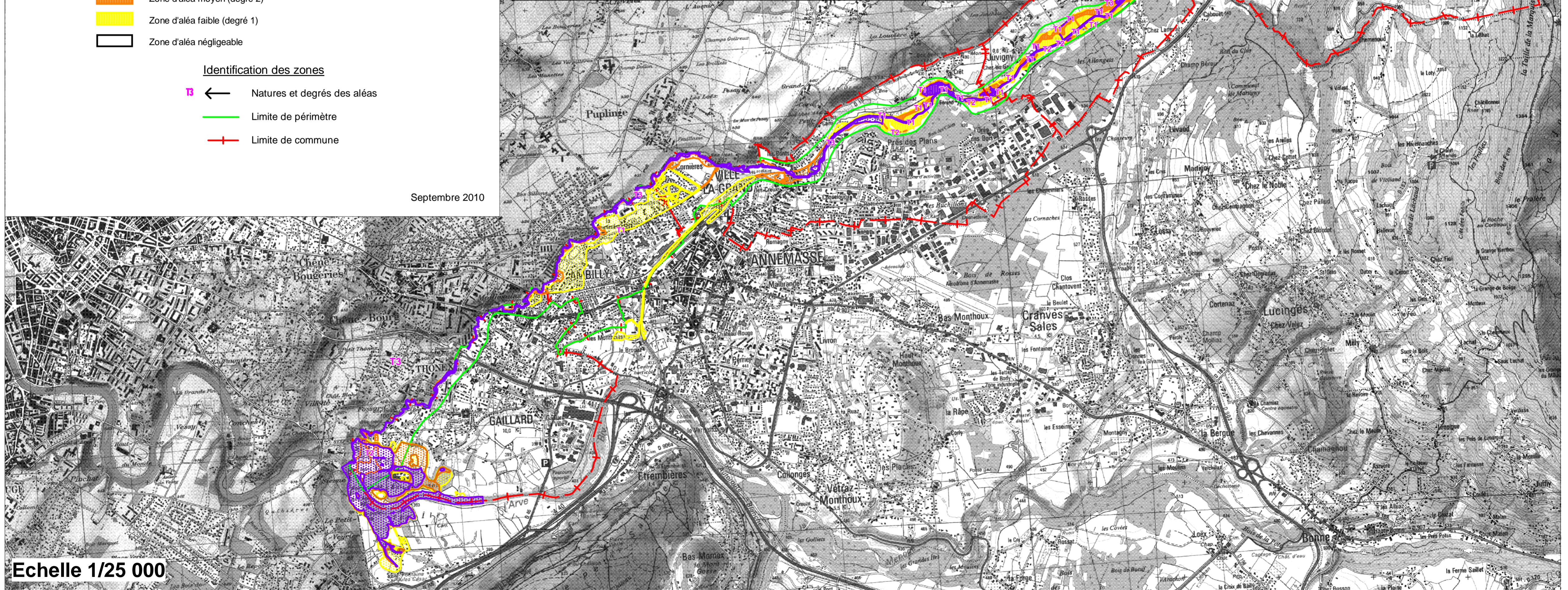
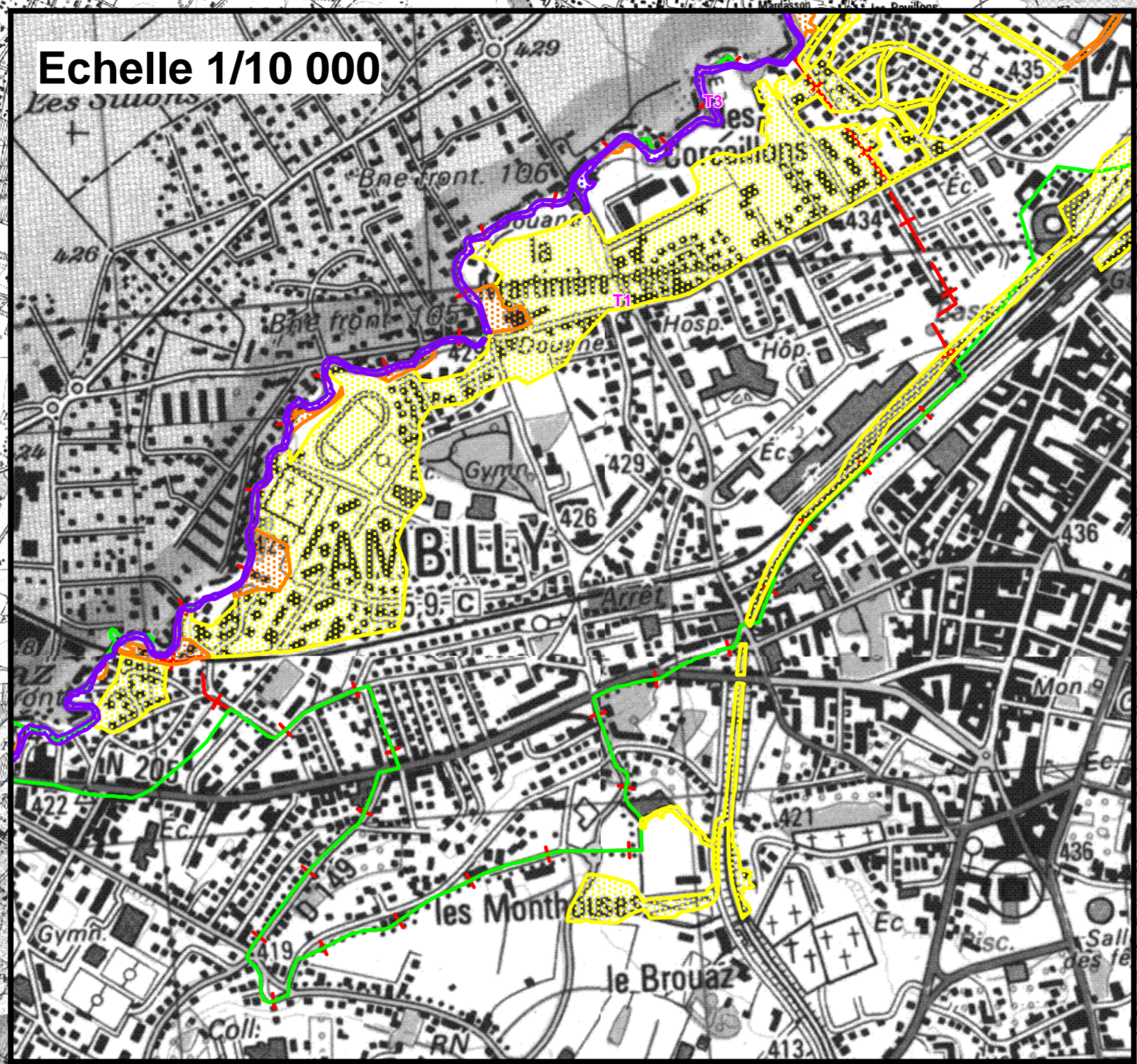
### Nature d'aléa

T : Torrentiel

### Identification des zones

-  ← Natures et degrés des aléas
-  Limite de périmètre
-  Limite de commune

Septembre 2010



Echelle 1/25 000