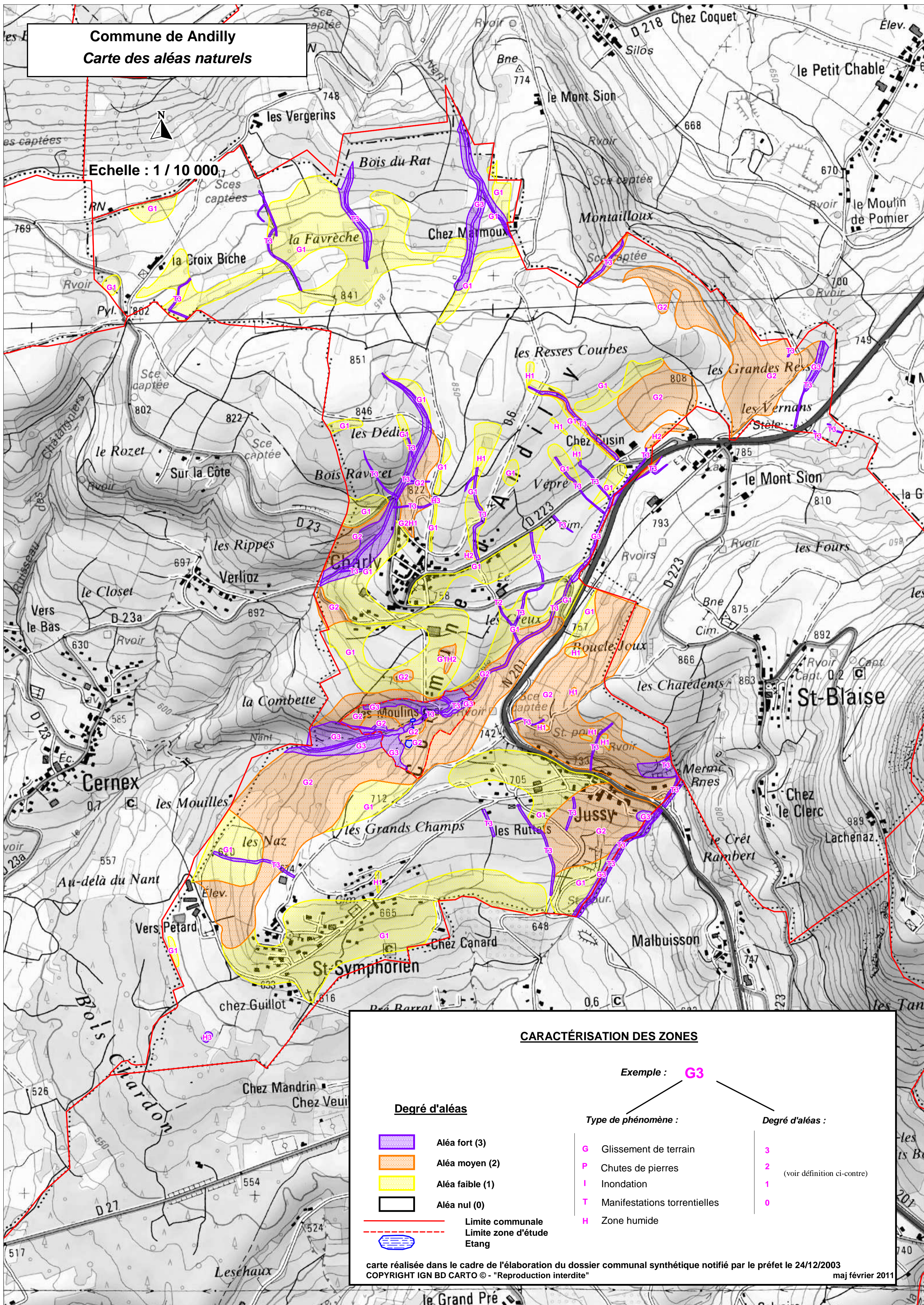


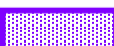

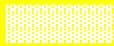

Commune de Andilly
Carte des aléas naturels



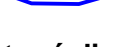
Echelle : 1 / 10 000



CARACTÉRISATION DES ZONES

Degré d'aléas

-  Aléa fort (3)
-  Aléa moyen (2)
-  Aléa faible (1)
-  Aléa nul (0)

-  Limite communale
-  Limite zone d'étude
-  Etang

Exemple : **G3**

Type de phénomène :

- G** Glissement de terrain
- P** Chutes de pierres
- I** Inondation
- T** Manifestations torrentielles
- H** Zone humide

Degré d'aléas :

- 3**
- 2** (voir définition ci-contre)
- 1**
- 0**