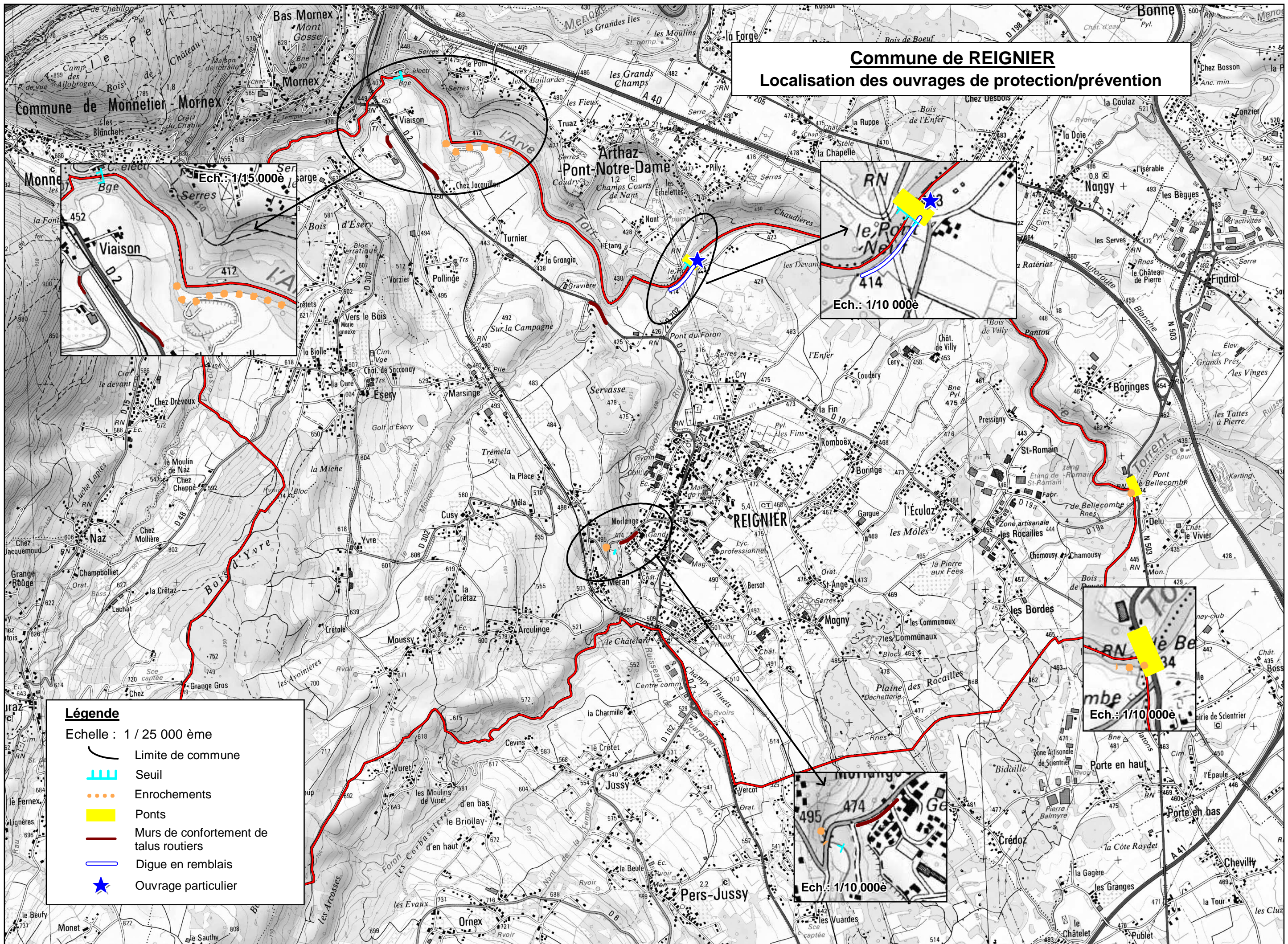









Commune de REIGNIER

Localisation des ouvrages de protection/prévention



Légende

Echelle : 1 / 25 000 ème

-  Limite de commune
-  Seuil
-  Enrochements
-  Ponts
-  Murs de confortement de talus routiers
-  Digue en remblais
-  Ouvrage particulier

Le Pont Notre-Dame

Ech.: 1/10 000è

le Be...

Ech.: 1/10 000è

Morlange

Ech.: 1/10 000è